



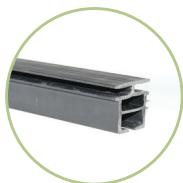
> verde *fastframe*™

v-stAND instructions





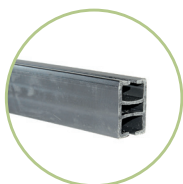
contents



6 pcs*

.....
FRAME OUTSIDE

*1 PC UPPER OUTSIDE FRAME, 1 PC LOWER OUTSIDE
FRAME, 4 PCS SIDE FRAME



1 pc

.....
FRAME SUPPORT



2 pcs

.....
FRAME CORNER



2 pcs

.....
V-STAND BASE



2 pcs

.....
FRAME T-CONNECTOR



STEP 1

Unpack all components and make sure that the kit is complete.





STEP 2



Insert the v-Stand bases into the lower outside frame section.



STEP 3



Insert a side frame section into each v-Stand base by sliding it through the guides until it is seated at the bottom. You should now have the bottom half of your v-Stand complete.



STEP 4



Assemble the middle section by attaching the two T-Connectors to each end of the centre frame support.



STEP 5



Glide the middle section into the side frames (a) so that only half of the T-Connectors are inserted as shown in (b).



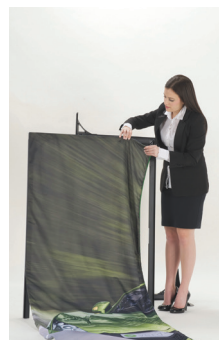
STEP 6 STEP 7 STEP 8



Start assembling the top half of your v-Stand by inserting the two frame corners into each end of the upper frame section.



Insert the remaining side frame sections to each frame corner. You should now have the top half of your v-Stand complete.



Begin inserting the graphic panel into the top half of your v-Stand starting from left to right until you are halfway down the top frame section.



STEP 9



Insert the top half frame section into the bottom half of your v-Stand by guiding it through the T-Connectors. Continue to insert the rest of your graphic panel starting from the lower outside frame section to create enough slack and tension for a smooth display finish.



you ARE now READY
to DISPLAY your v-STAND!

Graphic panels can be easily removed
and replaced any time you wish.



verde *fastframe*™

135 ADDISON HALL CIRCLE, UNIT 3 AURORA, ON CANADA L4G 3X8
W: VERDEINC.CA T: 905.771.3773 F: 905.771.1077