

A REVOLUTIONARY sign
system like no other
on the planet!



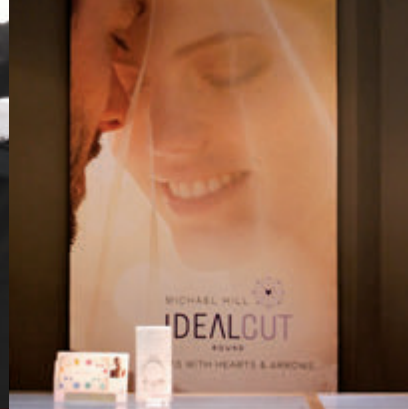
> verde *fastframe*™



ASSEMBLES
in minutes
—
no tools
REQUIRED



INSERT DISPLAY
GRAPHICS SIMPLY
AND EASILY



AVAILABLE in
Any size AND
Any colour



Lightweight
AND MODULAR
—
MADE ENTIRELY
FROM RECLAIMED
PLASTIC




REUSABLE
FOR FUTURE
PROMOTIONS



a better way to display your message

We knew there had to be a better way to display your message – one that made sense for your business and for the environment. That's why we created the Verde *fastframe*™, an innovative signage system that saves you time and money and helps you be kinder to the planet.

"THIS IS THE KIND OF FRESH THINKING OUR CUSTOMERS DEMAND FROM US IN ORDER TO STAY COMPETITIVE. IT TRULY IS A BETTER SIGNAGE SYSTEM IN EVERY WAY." – Antony Rubino, Founder and President



THE VERDE FASTFRAME ASSEMBLES IN MINUTES,
WITH NO TOOLS REQUIRED AND NO LOOSE PARTS
TO WORRY ABOUT. SO YOU'LL SAVE TIME AND
CUT DOWN ON INSTALLATION COSTS.



Installation. Pure and Simplified.

STEP ONE:

Build out the fast-frame by laying out the four frame panels and corner connectors in the required shapes.

STEP TWO:

Insert corner connectors into frame panels.

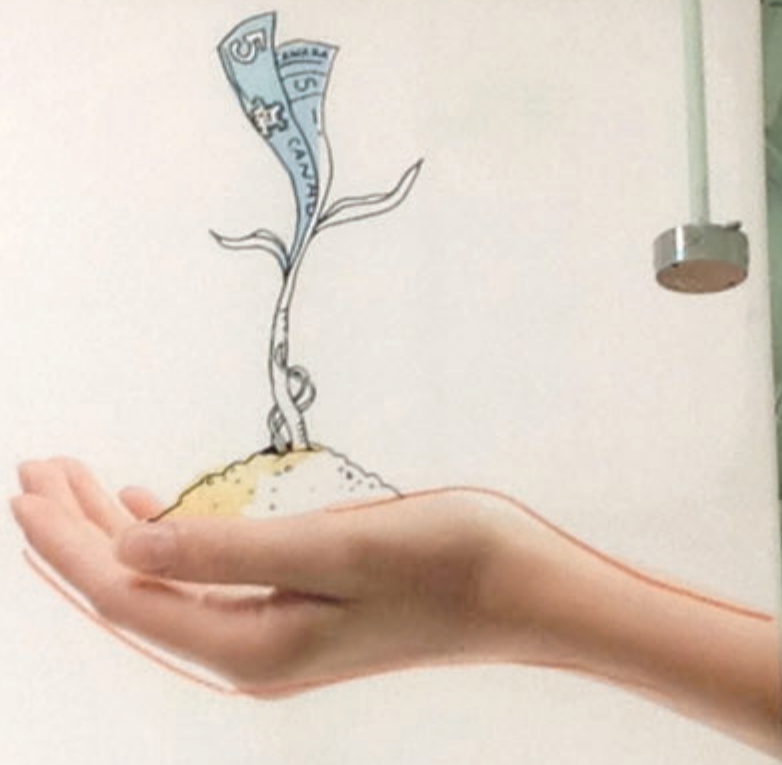
STEP THREE:

Insert flexible graphic panel by guiding the beading into the specially designed channel.

STEP FOUR:

Your fastframe is now complete and ready to hang/display.

ceiling suspended



*find out how sustainability
saves - let's chat.*

our customers are our advisors - join the conversation

terra20.com twitter.com/exploreterra20 facebook.com/exploreterra20



WALL-MOUNTED

THE
MICHAEL HILL
DESIGNER BRIDAL COLLECTION
YOUR SYMPHONY OF LIGHT

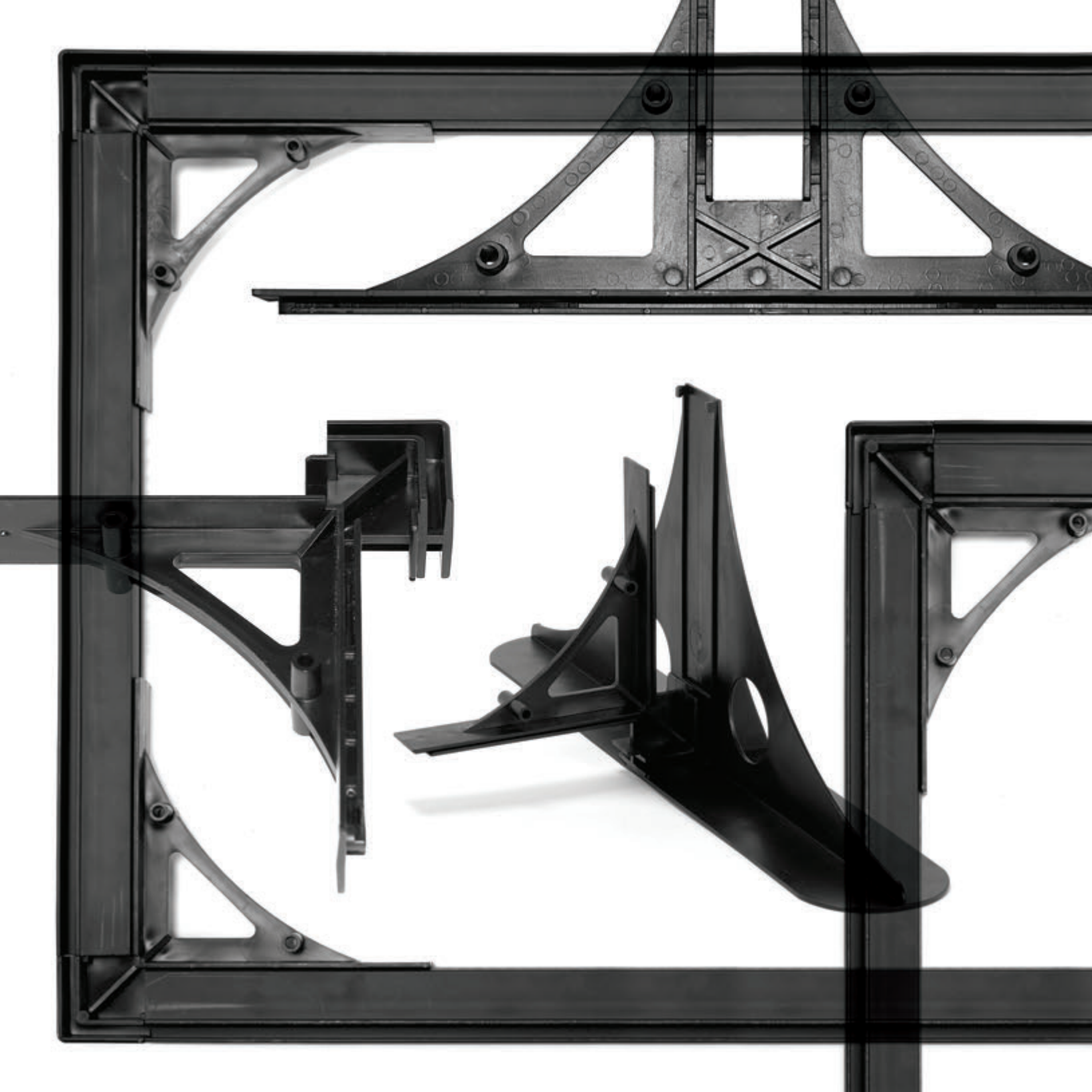
a versatile product for a wide range of signage needs

We know there's more than one way to display your message. That's why we designed the Verde *fastframe* as a versatile solution with multiple applications.

The Verde *fastframe* is light, so it's perfect for hanging and mobile displays. It is available in any size and colour and can be configured any way you want: front-mounted, wraparound or double-sided.

There are so many uses for Verde *fastframe* in almost any environment.

DÉCOR WALLS • BANNER STANDS • in-STORE BANNERS • TRADE
SHOW BANNERS • ART EXHIBITS • HANGING WINDOW SIGNAGE •
OUTDOOR EVENT SIGNAGE • MUSEUM WALLS • THEATRE BACKDROPS



Free-standing



the v-stand

V stands for versatile! Just add a v-stand to your Verde *fastframe* and it's ready for display at a trade show or exhibit. The Verde *fastframe* v-stand is made with high-impact polystyrene – compact and lightweight so it's easy to transport, and durable so it can withstand the rigours of travel and display and can be used over and over again. Designed for maximum sturdiness and stability, the Verde *fastframe* v-stand can be used on all floor surfaces and even on table tops.

> verde *fastframe*[™]
v-stand





Verde is built on a philosophy of giving – to the environment, to our communities, to our great and beautiful planet. That's why we made a commitment to donate a portion of our profits from every Verde *fastframe* to an organization that's really making a difference in the world. So every time you buy a Verde *fastframe*, you're not just getting a great product, you're also contributing to a great cause.

BECOME PART OF THE VERDE REVOLUTION TODAY

Call us or visit us online to learn more about this remarkable product.

1.800.341.6738

www.verdeinc.ca

verde *fastframe*™ dealer:



The Verde *fastframe*™ is a patent product.

FOLLOW US ON...

